

---

# CREDIBLE SOURCES AND ARTIFICIAL INTELLIGENCE



# CAN I USE AI AS A SOURCE IN MY ASSIGNMENTS?

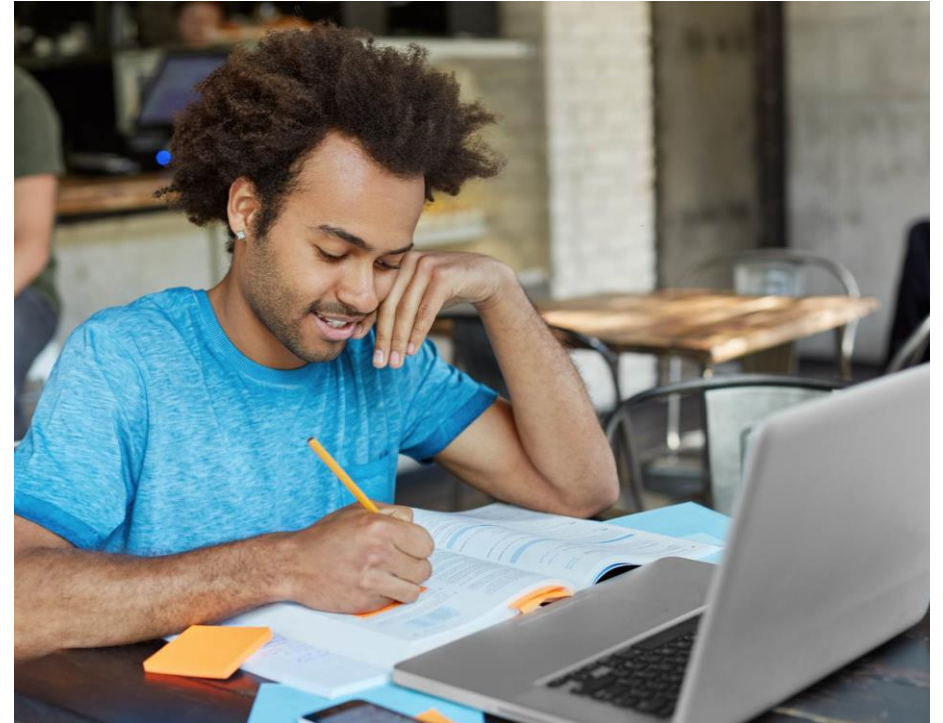
When preparing your assignments you are required to use credible material to support your arguments.

This is to make sure that content you include is

- accurate
- up to date.

Most marking criteria include a rubric for the quality of sources you choose to include in your work. You will

- gain marks for basing your response on credible sources
- lose marks for relying on non-academic sources.



# ARE AI TOOLS CREDIBLE SOURCES?



You can test whether a resource is credible by evaluating it using the REVIEW criteria:

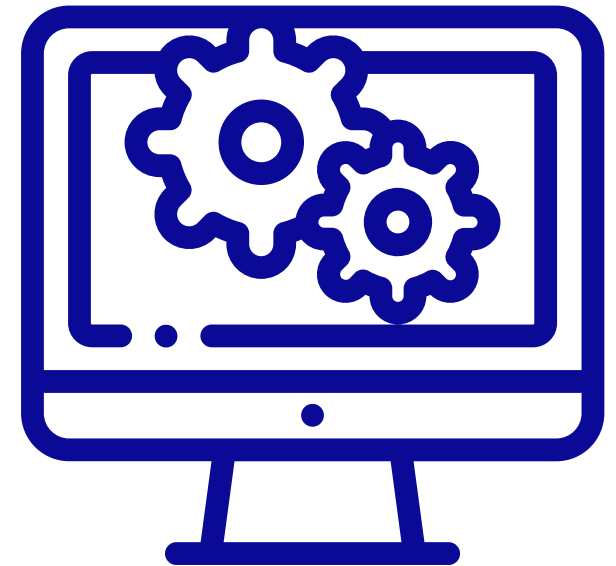
- Relevance:** Does the material directly relate to the topic under discussion?
- Expertise of Author:** What is the author's background and is she or he an authoritative source?
- Viewpoint of Author:** Is the source of the information objective?
- Intended Audience:** Who is this information written for? Is it being used in the right context?
- Evidence:** Has the evidence presented been collected using a methodology that is sound?
- When Published:** Is the information still current and is the information still important in the field?

---

# RELEVANCE

While some of the output may be relevant, ChatGPT may choose to focus on content points that do not align with your course content or study context.

**Example:** US-based rather than Australian social issues, statistics or codes of ethics.

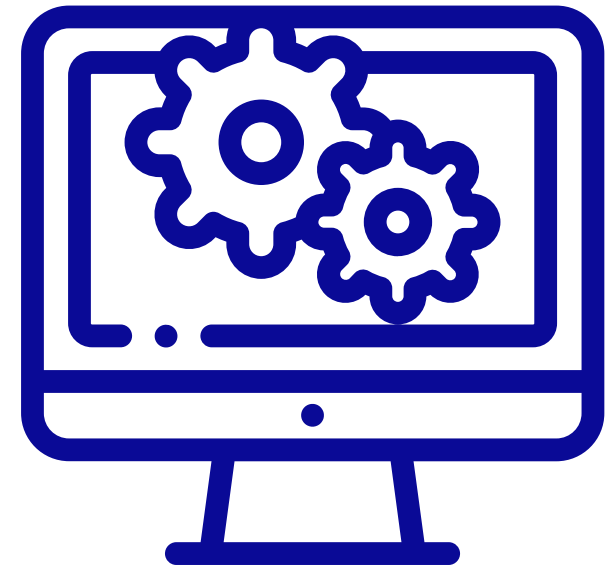


---

# EXPERTISE OF THE AUTHOR

The author/source of information is generally unknown.

If chatGPT provides its sources through citations, the original publications need to be verified, and the authors' level of expertise evaluated.



---

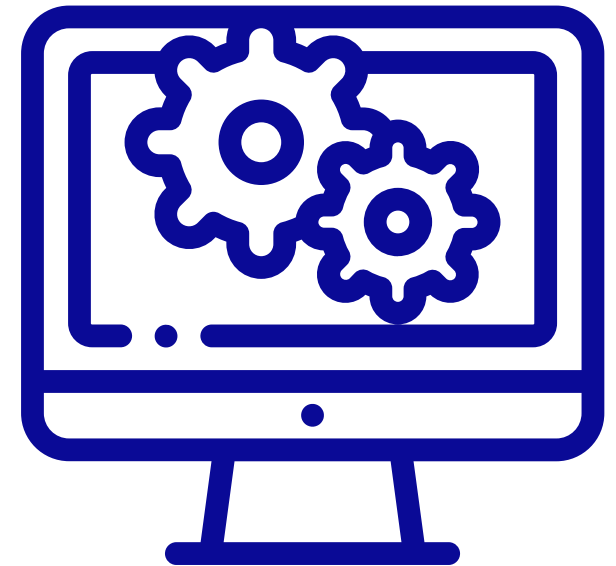
# VIEWPOINT OF THE AUTHOR

The author/source of the information is generally unknown.

If chatGPT provides its sources through citations, the

original publications need to be verified and the authors'

biases identified.

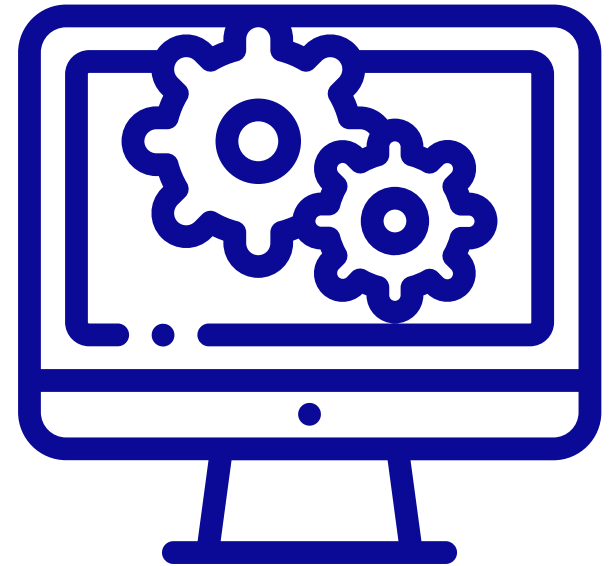


---

# INTENDED AUDIENCE

ChatGPT can explain complex ideas in a simple way.

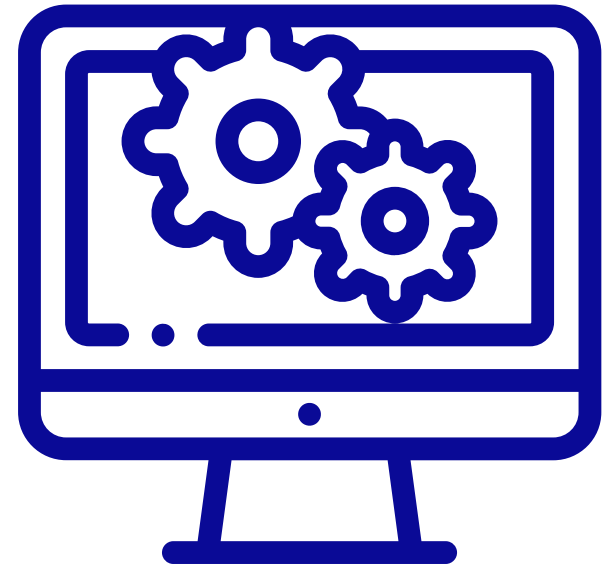
However, it is aimed at the general public and often does not have the capacity to engage with topics at a university level.



---

# EVIDENCE

ChatGPT provides no evidence for its output unless prompted. When prompted, it cites a mix of credible sources, non-academic sources and fabricated sources.

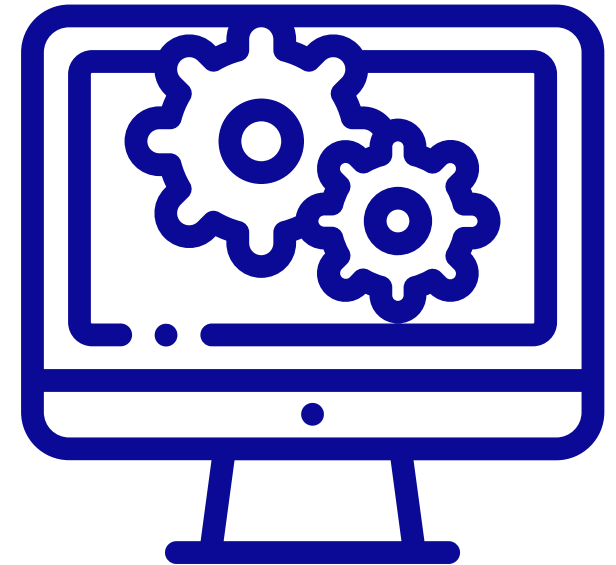




---

# WHEN PUBLISHED

ChatGPT does not share publication years of the sources it gathers content from unless prompted. Content may not be up to date.



# A CREDIBLE SOURCE?

ChatGPT is currently not considered to be a credible academic source of information.



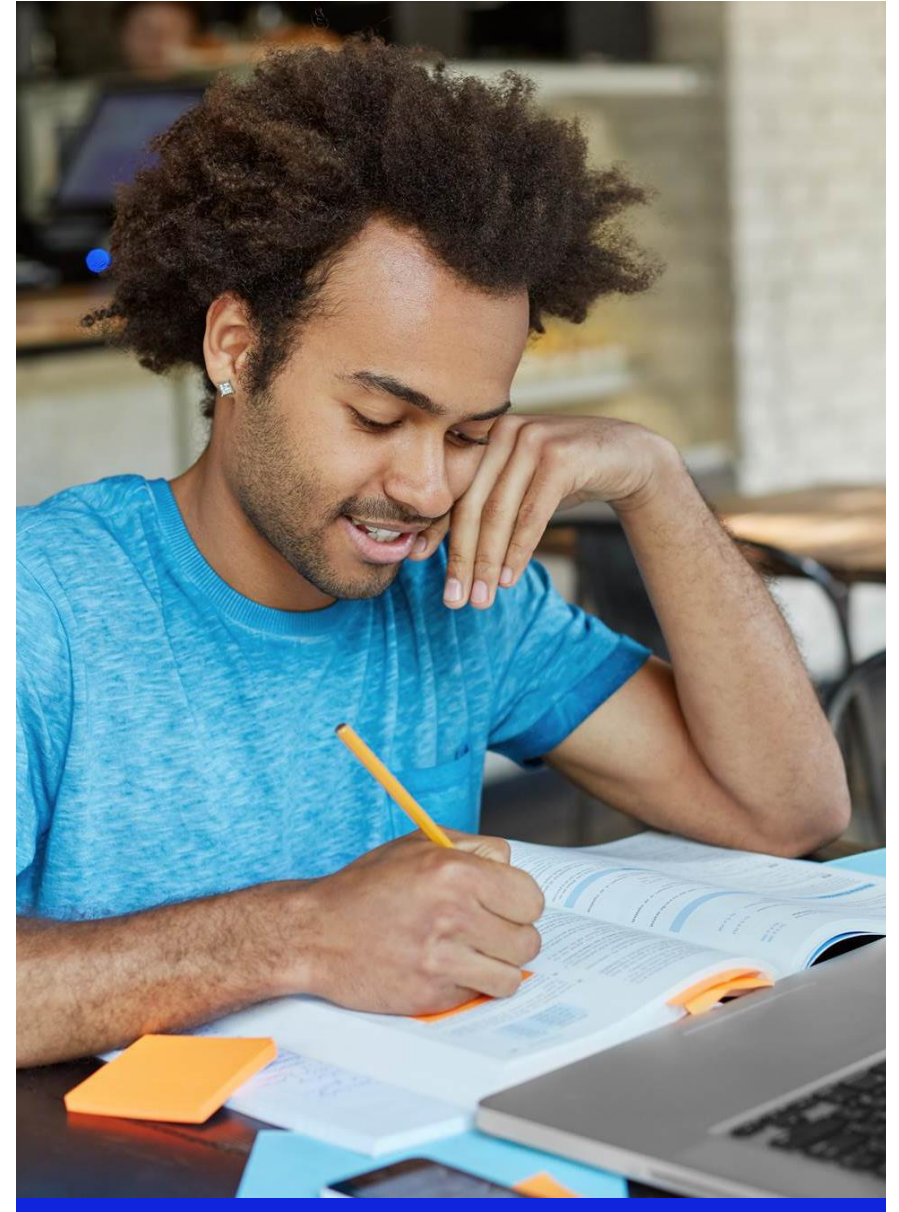
Are you a credible source of information?



I strive to provide accurate, reliable, and well-researched information based on a vast amount of data, knowledge from reputable sources, and training on diverse and authoritative texts. However, I encourage users to cross-reference important information, especially when it relates to critical decisions or current events, as my knowledge has a cutoff in September 2021, and I don't have real-time internet access unless specified in certain modes. My responses are meant to assist with learning, but they should not replace professional advice or in-depth research.

# USING AI TOOLS RESPONSIBLY

1. Check whether the use of AI is permitted for the assessment you are working on.
2. If it is, use it as a 'study buddy' for inspiration to get started on your own research and writing. Do not give up control of your learning process. You would not ask a human study buddy to write an assessment for you, and the same is true for AI tools.
3. If you do use AI during any part of the assessment writing process, make sure you acknowledge it in an Appendix.



# FURTHER RESOURCES

Visit the Academic Skills Resources website:

Making The  
Technology Work For  
You

Essential Technology Skills

Being An Effective Online Learner

Using Technology to Enhance Your  
Studies

Generative Artificial Intelligence  
and Ethical Practice

## Generative Artificial Intelligence and Ethical Practice

Generative Artificial Intelligence technologies like ChatGPT are knowledge-enhancement tools. Using these tools ethically will be an important part of your future professional life. When you use Generative Artificial Intelligence to complete academic work you must be aware of its strengths and limitations, and explicitly acknowledge the way you have used it.



## Common FAQs on using Generative Artificial Intelligence Technologies

How can I use Generative Artificial Intelligence like ChatGPT ethically?

You can use it to:

- assist you with administrative tasks, including note-taking, scheduling, and generating generic samples for

Or email the Academic Skills team:

[LearningHub@acap.edu.au](mailto:LearningHub@acap.edu.au)